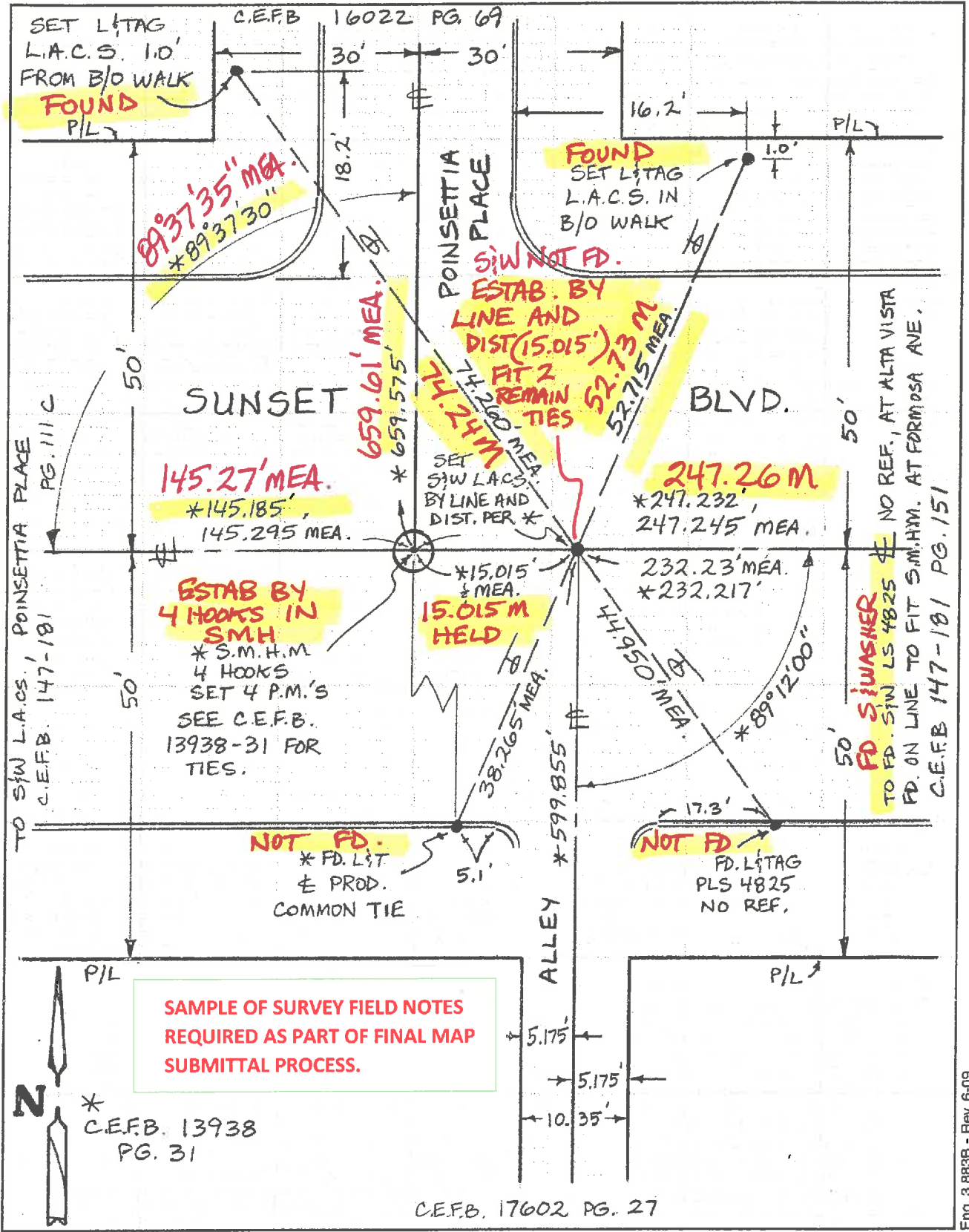


NOTE: Additions or changes must be initiated, and dated.



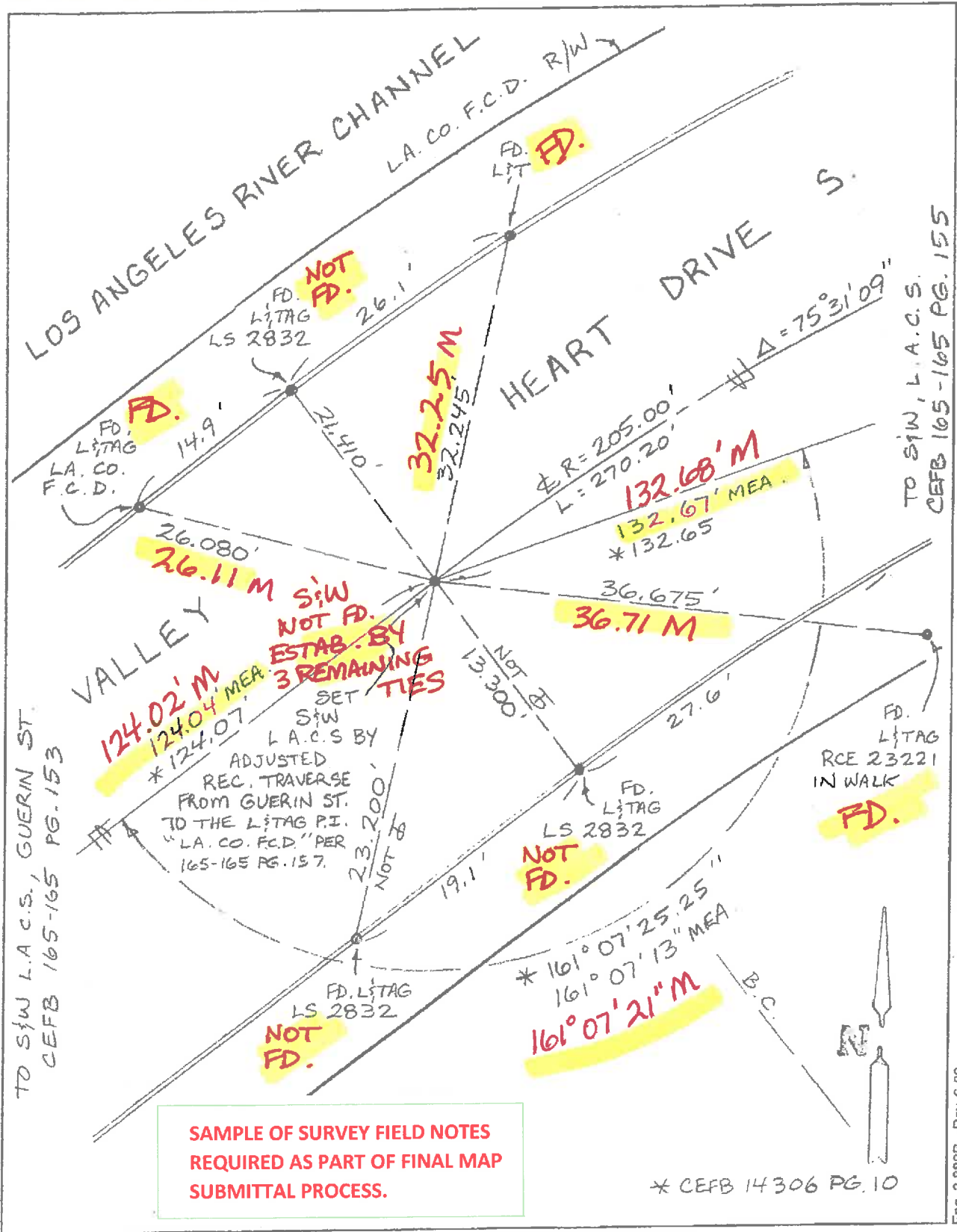
SAMPLE OF SURVEY FIELD NOTES  
REQUIRED AS PART OF FINAL MAP  
SUBMITTAL PROCESS.

Return original to  
BUREAU OF ENGINEERING  
SURVEY DIVISION  
201 N. Figueroa St., Suite 1100, Los Angeles 90012

ALL DISTANCES SHOWN ARE GROUND DISTANCES UNLESS OTHERWISE STATED

Eng. 3.883B - Rev. 6-09

NOTE: Additions or changes must be initiated, and dated.



**SAMPLE OF SURVEY FIELD NOTES  
REQUIRED AS PART OF FINAL MAP  
SUBMITTAL PROCESS.**

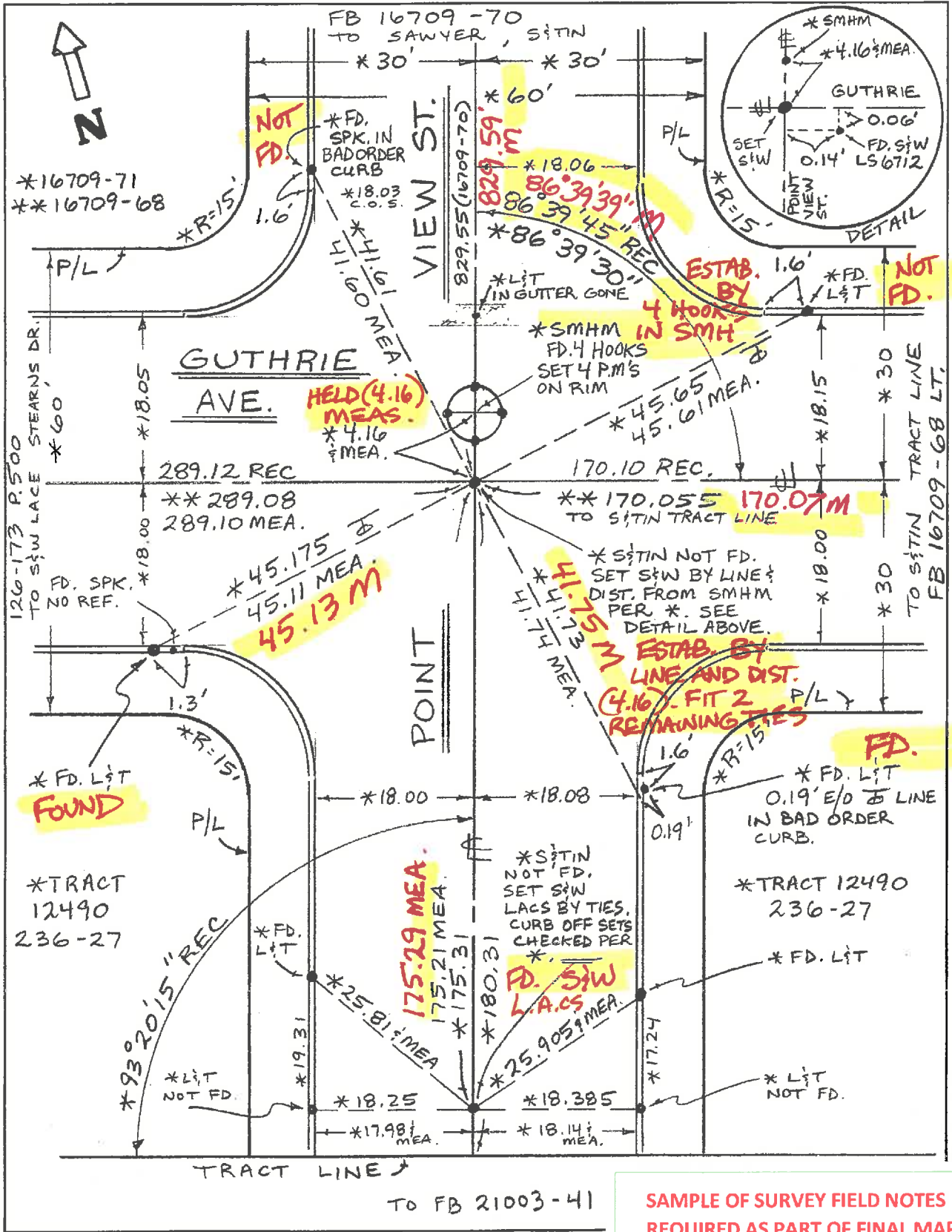
Return original to  
 BUREAU OF ENGINEERING  
 SURVEY DIVISION  
 201 N. Figueroa St., Suite 1100, Los Angeles 90012  
 TO S/W L.A.C.S., GUERIN ST.  
 CEFB 165-165 PG. 153

TO S/W, L.A.C.S.  
 CEFB 165-165 PG. 155

ALL DISTANCES SHOWN ARE GROUND DISTANCES UNLESS OTHERWISE STATED

Eng. 3.883B - Rev. 6-09

NOTE: Additions or changes must be initiated, and dated.



Return original to  
 BUREAU OF ENGINEERING  
 SURVEY DIVISION  
 201 N. Figueroa St., Suite 1100, Los Angeles 90012

ALL DISTANCES SHOWN ARE GROUND DISTANCES UNLESS OTHERWISE STATED

1B - Rev. 6-08

**SAMPLE OF SURVEY FIELD NOTES  
 REQUIRED AS PART OF FINAL MAP  
 SUBMITTAL PROCESS.**

